

HYDRAULIC BREAKER AND QUICK CLAMP

1. SELECTING HYDRAULIC BREAKER

- ※ Read safety hints in this manual and breaker & quick coupler manuals in website (Dealer Portal) before using breaker and quick coupler.
- 1) Become familiar with the manual and select breakers suitable to machine specifications.
- 2) Make careful selection in consideration of oil quantity, pressure and striking force, to enable satisfied performance.
- 3) When apply a breaker to the machine, consult your local dealer of Hyundai for further explanation.

2. CIRCUIT CONFIGURATION

- 1) As for breaker oil pressure line, use extra spool of main control valve.
- 2) Set proper breaker pressure on load relief valve.
- 3) The pressure of the ROBEX18-9 system is 210 kgf/cm² (2990 psi).
- 4) The accumulator should be used to the breaker charging and return line.
If the accumulator is not used, it will be damage as the input wave is delivered.
※ Keep the pressure pulsation of pump below 60 kgf/cm² (850 psi) by installing the accumulator.
- 5) Do not connect the breaker return line to the main control, but connect to the return line front of the cooler.
- 6) Do not connect the breaker return line to drain lines, such as of swing motor, travel motor or pump, otherwise they should be damaged.
- 7) One of spool of the main control valve should be connected to the tank.
- 8) Select the size of pipe laying considering the back pressure.
- 9) Shimless tube should be used for the piping. The hose and seal should be used Hyundai genuine parts.
- 10) Weld the bracket for pipe clamp to prevent damage caused by vibration.

3. MAINTENANCE

1) MAINTENANCE OF HYDRAULIC OIL AND FILTER

- (1) As machine with an hydraulic breaker provides the hydraulic oil becomes severely contaminated.
- (2) So, unless frequently maintained, the machine may easily go out of order.
- (3) Inspect and maintain hydraulic oil and 4 kinds of filter elements in particular, in order to prolong machine life.
- (4) Replace when the breaker work is used for short time according to the standard of right graph.

2) RELEASE THE PRESSURE IN BREAKER CIRCUIT

When breaker operating is finished, stop engine and push pedal or switch for breaker to release pressure in breaker circuit.

If pressure still remains, the lifetime of the diaphragm in the accumulator will be shortened.

- 3) Be careful to prevent contamination by dust, sand and etc.
If such pollution become mixed into the oil, the pump moving parts will wear abnormally, shorten lifetime and become damaged.
- 4) When operating breaker, bolts and nuts of main equipment may be loosened by vibration. So, it must be inspected periodically.

Service interval

unit : hours

Attachment	Operating rate	Hydraulic oil	Filter element
Breaker	100 %	600* ¹	200
		1000* ²	

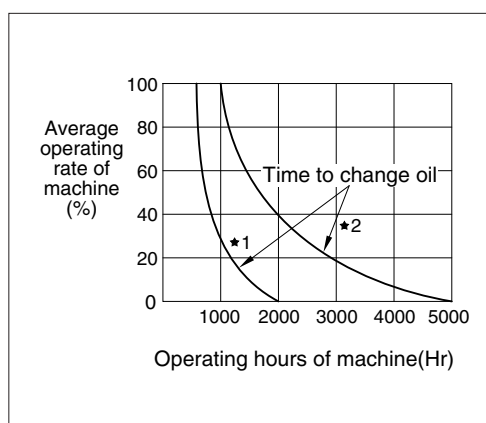
*¹ : Conventional hydraulic oil

*² : Hyundai genuine long life hydraulic oil

● Replace following filter at same time

· Hydraulic oil return filter : 1 EA

Hyd oil change guide for hydraulic breaker



*¹ : Conventional hydraulic oil

*² : Hyundai genuine long life hydraulic oil

4. PRECAUTIONS WHILE OPERATING THE BREAKER

DO NOT BREAK ROCK WHILE LOWERING

As the breaker is heavy in comparison with bucket, it must be operated slowly.

If breaker is rapidly pushed down, working device may be damaged.



DIRECTION OF THRUST

Apply a thrust in a straight line with the tool. Place the tool on a rock with the hammering side as vertically as possible. If the hammering side is oblique, the tool may slip during hammering, causing the chisel and piston to break, or seized. When breaking, select the point of a rock on which hammering can perform stably and fully stabilize the chisel to the hammer.



PROPER THRUST

To break effectively, a proper thrust force must be applied to the breaker. If thrust is too low, impact energy of the piston may not be sufficient to break rocks.

Breaking force is transferred to the breaker body, arm and boom resulting in damage of those parts.



Move the impact point from the edge to the interior. Never try to break off a too large block, if the object has not broken within 30 seconds. The object should be broken up piece by piece in small blocks. Large distance steps will not improve working results.

Operating the breaker longer than 30 seconds may cause damage to the breaker.



BLANKS THRUST

Blank blows, which are impact on the chisel without contact with the object, are very harmful for the breaker. Always press the chisel down onto the material before starting the breaker. And stop operation immediately as soon as the object has been broken. If operation is continued, blank blows could result in excessive wear to major components.



DO NOT MOVE MACHINE OR BREAKER WHILE STRIKING

Do not move hammer while striking.

This will cause damage to the working device and the swing system.



OPERATE BREAKER WITH A GAP IN EXCESS OF 100 mm (4 inches) FROM THE END OF THE STROKE TIP

If breaker is operated with the end tip, the cylinder may be damaged.



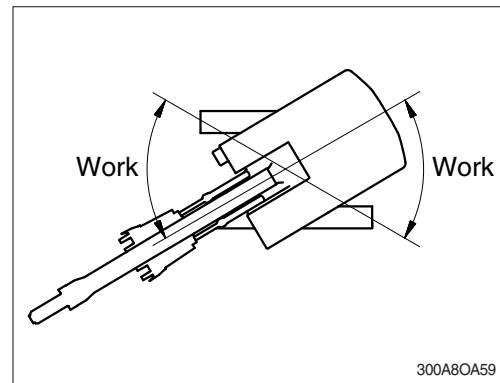
STOP THE OPERATION IMMEDIATELY IF HOSES VIBRATE EXCESSIVELY

Violent pulsations of the high / low pressure breaker hoses could indicate an accumulator fault. Check for oil leaks at the hose fitting points retightening as necessary. Should symptoms persist, contact the service shop appointed by the Hyundai dealer in your territory for repair. An excessive gap between tool and workpiece between strikes may indicate seizure of the tool in the front head. Disassemble the front head, inspect the components and repair or replace defective parts.

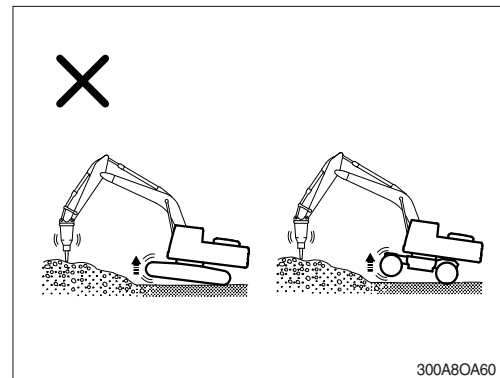


DO NOT WORK WHILE IN A SWING STATE

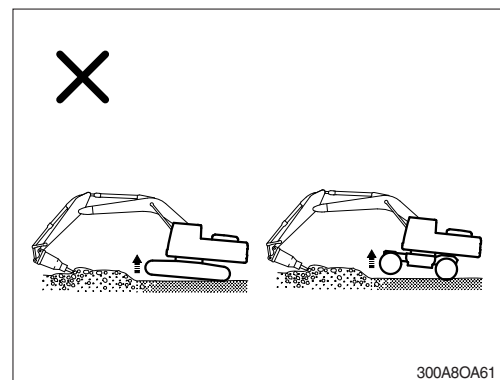
Do not work while swinging the upper structure. It cause oil leakage of the bend in the track shoe and rollers.



Conversely, if thrust is excessive or breaking is performed with boom of the lower chassis raised as shown, the machine may suddenly tip toward the movement. The breaker body may strike the broken rocks violently resulting in damage.

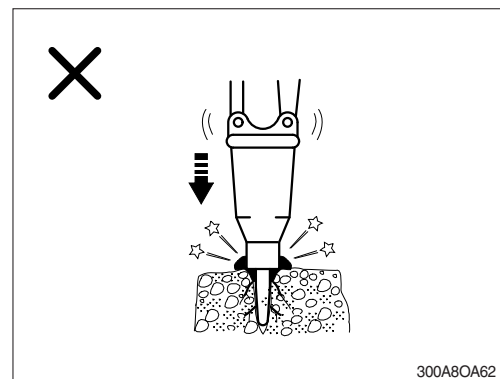


Do not extend the bucket cylinder fully and thrusting to raise the machine off the ground.



Excessive force as above may also result in vibrations being transmitted to the tracks causing damage.

Care is required to ensure adequate but not excessive force is applied to the breaker in operation.



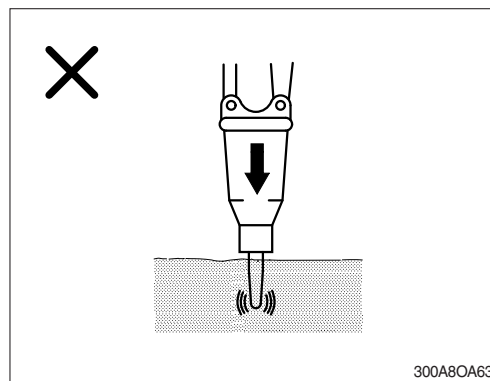
NEVER DRIVE THE CHISEL INTO THE GROUND

If the advance is too large and the chisel is not rocked to release the dust, the chisel will be driven into the material without breaking the material. This causes the chisel tip to glow red-hot and lose its hardness.

As a result, the chisel wears out more quickly. Operating in this way is not permitted.

Dust dampens impact power, when the chisel is inserted into the ground, and reduces the efficiency of the breaker. Tilt the breaker slightly backward and forward, not more than 5° , while operating so that the dust can escape.

Do not rock the breaker at angles greater than 5° or the chisel will be broken.

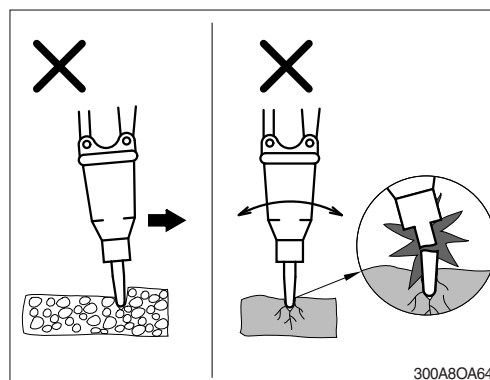


NEVER USE AS A LEVER

Do not use the chisel as a lever; e.g. crowbar, as this will cause the chisel to break.

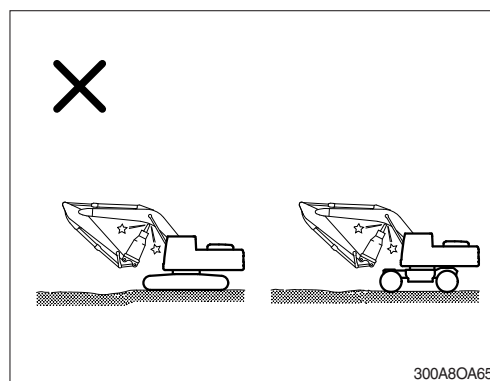
Under any circumstances, operating in this way is not permitted.

Most of bending failure of the chisel may be caused by lever action in stone that is inside hard or frozen ground. Be careful and stop operating if you feel sudden resistance under the chisel.



TAKE CARE OF CHISEL AND BOOM INTERFACE

Be aware of clearance between breaker tip and the underside of boom as shown.



NEVER USE FOR LIFT OR TRANSPORT PURPOSES

The hydraulic breaker is not designed to lift or transport loads. Never use the chisel as a lifting point.

This is dangerous and could damage the breaker or the chisel.

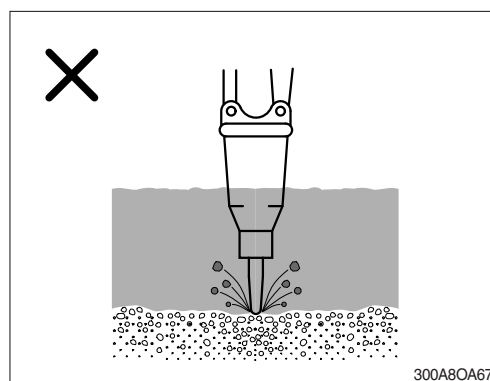


NEVER USE THE HYDRAULIC BREAKER UNDER WATER

The hydraulic breaker, as a standard assembly, never be used in or under water without prior conversion. If you use under water, water fills the impact chamber between the piston and the chisel, a strong hydraulic pressure wave is generated and will damage the seals in the breaker. And, in addition, corrosion, lack of lubrication or penetration of water could result in further damage to components of the breaker and the lower chassis.

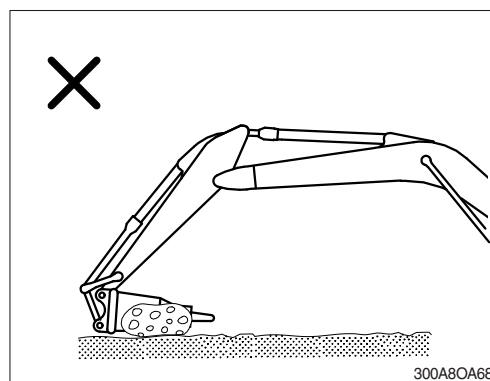
To operate the breaker under water, compressed air must be supplied into the breaker, into the impact chamber of the front-head, prior to use.

Consult your Hyundai dealer for the underwater kit.



DO NOT USE BREAKER TO CARRY BROKEN STONE OR ROCK BY SWING OPERATING

This may damage the operation device and swing system.

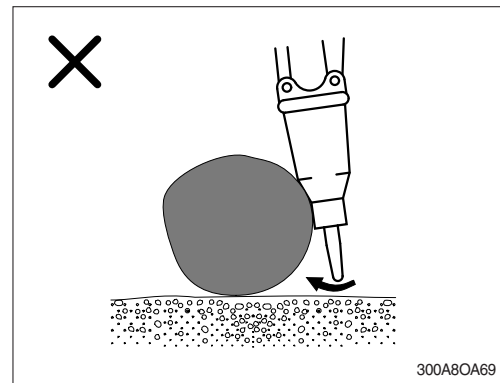


NEVER USE THE CHISEL OR HYDRAULIC BREAKER TO MOVE ROCKS OR OTHER OBJECTS

The hydraulic breaker is not designed for this usage.

Do not use the breaker or chisel to roll, push the object or reposition the lower chassis.

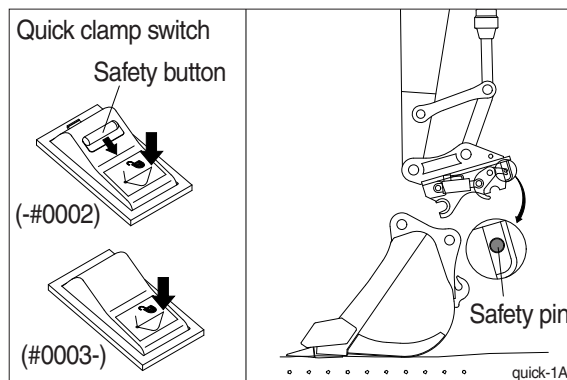
This may cause damage to the breaker and the lower chassis.



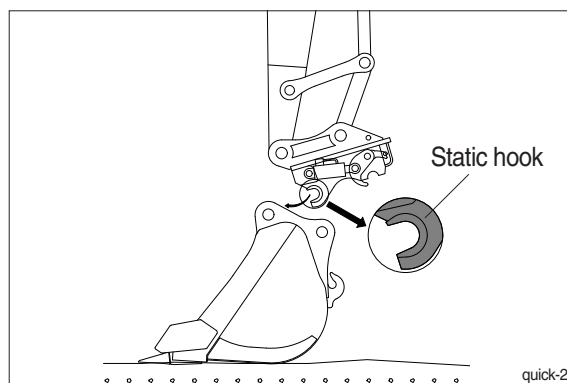
5. QUICK CLAMP

1) FIXING BUCKET WITH QUICK CLAMP

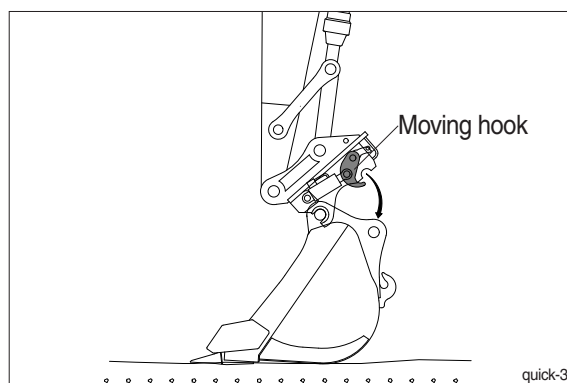
- (1) Before fixing bucket, remove safety pin of the moving hook.
- (2) Pulling safety button(if equipped), press the quick clamp switch to unlock position. Then, the moving hook is placed on release position.



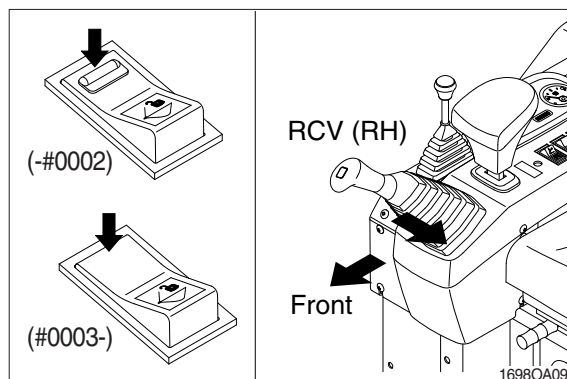
- (3) Aligning the arm and bucket, insert static hook of quick clamp to the bucket pin.



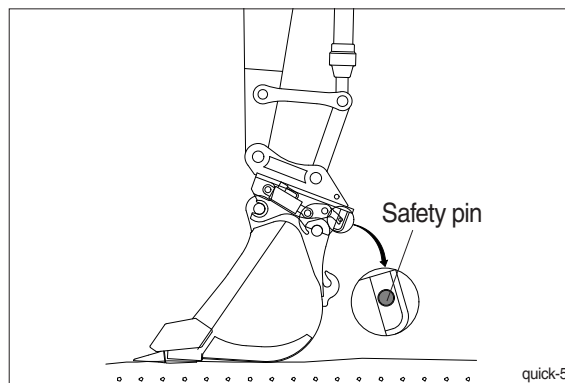
- (4) Operate RCV lever to bucket-in position. Then, the moving hook is coupled with the bucket link pin. Make sure that the moving hook is completely contacted with bucket link pin.



- (5) Press quick clamp switch to lock position. Operate RCV lever to bucket-in position.
- ※ **Be sure to check connection status between bucket pins and hooks of quick clamp.**



- (6) After checking the connection status between bucket pins and hooks of quick clamp, insert safety pin of moving hook to lock position.



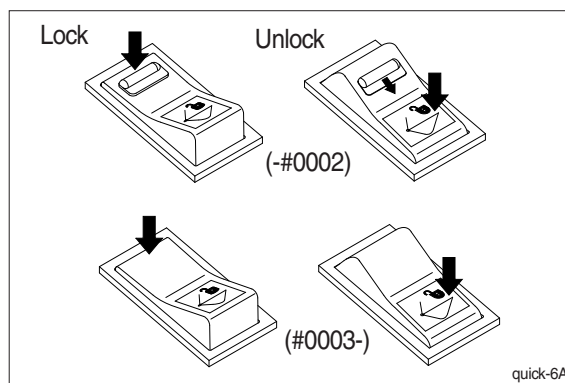
2) REMOVE BUCKET FROM QUICK CLAMP

Removing procedure is reverse of fixing.

3) PRE-CAUTION OF USING QUICK CLAMP

- ▲ When operating the machine with quick clamp, confirm that the quick clamp switch is lock position and safety pin of moving hook is inserted.

Operating the machine with quick clamp switch unlocked and without safety pin of moving hook can cause the bucket to drop off and bring about the accident.



- ▲ Serious injury or death can result from this accident.

- ▲ Be careful to operate the machine equipped with quick clamp. The bucket may hit cab, boom and boom cylinders when it reaches vicinity of them.

- ※ HYUNDAI will not be responsible for any injury or damage in case that safety pin is not installed properly.

